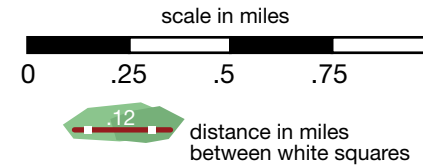


The Unofficial White Clay Creek and Middle Run Trail Map

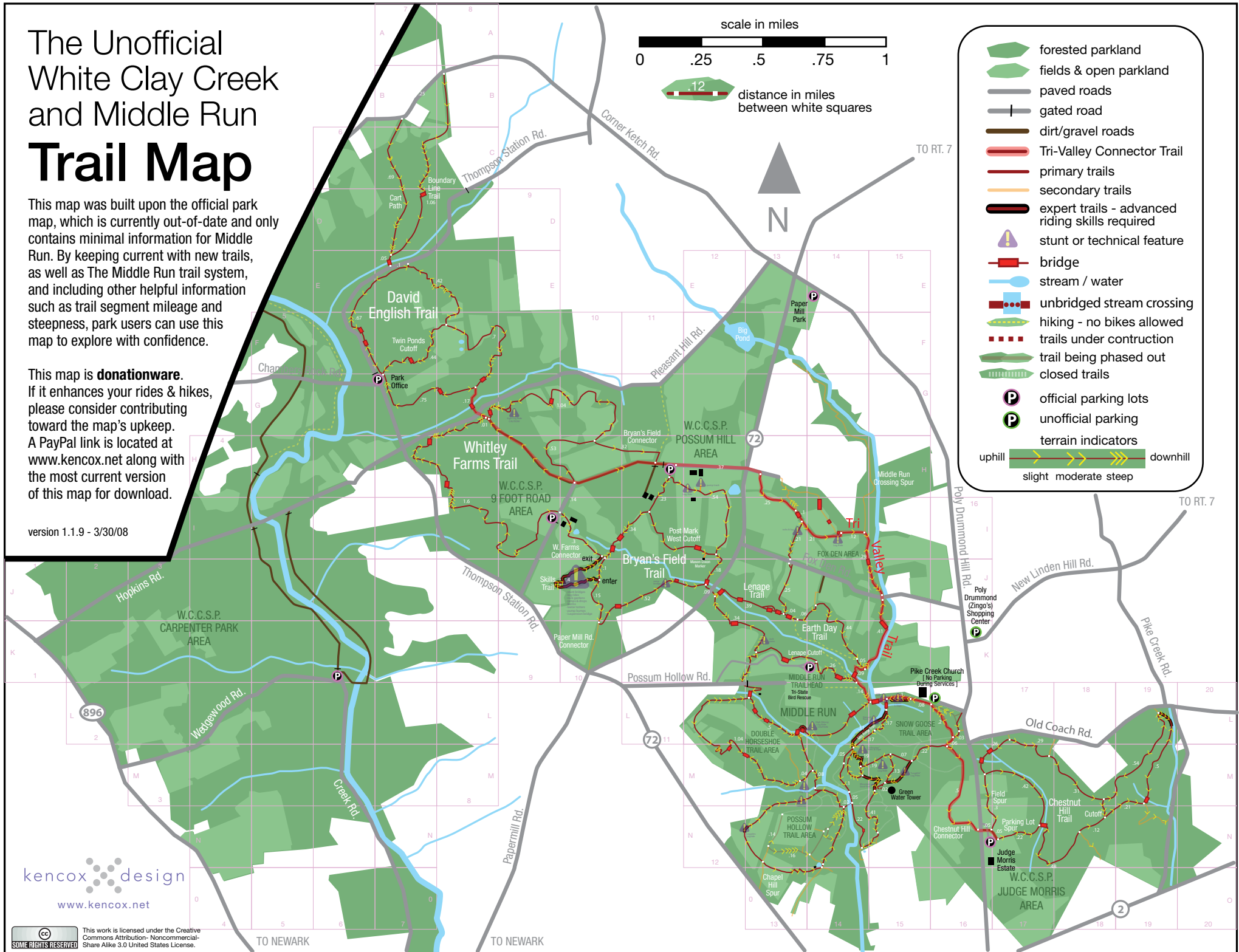
This map was built upon the official park map, which is currently out-of-date and only contains minimal information for Middle Run. By keeping current with new trails, as well as The Middle Run trail system, and including other helpful information such as trail segment mileage and steepness, park users can use this map to explore with confidence.

This map is **donationware**. If it enhances your rides & hikes, please consider contributing toward the map's upkeep. A PayPal link is located at www.kencox.net along with the most current version of this map for download.

version 1.1.9 - 3/30/08



- forested parkland
- fields & open parkland
- paved roads
- gated road
- dirt/gravel roads
- Tri-Valley Connector Trail
- primary trails
- secondary trails
- expert trails - advanced riding skills required
- stunt or technical feature
- bridge
- stream / water
- unbridged stream crossing
- hiking - no bikes allowed
- trails under construction
- trail being phased out
- closed trails
- official parking lots
- unofficial parking
- terrain indicators
- uphill slight moderate steep downhill



kencox design
www.kencox.net

This work is licensed under the Creative Commons Attribution- Noncommercial- Share Alike 3.0 United States License.